

# ALUMINUM CLAD SIGN PANELS

**ACM - ALUMINUM COMPOSITE MATERIAL-** white, black, & colors  
**INEXPENSIVE - LIGHTWEIGHT - HIGH STRENGTH** Available in -  
**white/white black/black yellow/white red/white**  
**blue/white brushed chrome/white brushed gold/mill**

48" x 96" sheets	per sheet
3mm gloss white 2 sides	72.00
3mm gloss white/matte white	72.00
3mm matte white/mill	68.00
3mm gloss black both sides	82.00
3mm gloss color/gloss white	82.00
3mm brush chrome/gloss white	95.00
3mm brush gold/mill	119.00
6mm gloss white 2 sides	119.00
6mm brush chrome/mill	153.00

48" x 120" sheets
3mm gloss white/white 48" x 120" -
6mmgloss white/white 48" x 120" -

**Quantity Discounts on ACM Panels**  
 5 sheets - less 10% 10 sheets -less 15%  
 (can be assorted)

## "ALUMACORR" WHITE

10mm (1/2") 4 ft. x 8 ft. 2 sided white  
 An exceptionally strong aluminum composite panel with a high density corrugated poly core that will not swell, rot, corrode, or delaminate under prolonged water exposure. Both faces are baked gloss white to not crack, chip, flake or peel. Average outdoor life expectancy of 10 years when properly installed. 189.00 ea.

## GREZON<sup>®</sup> BOARD

4 feet x 8 feet - 1/2" thick  
 Primed & Coated 1 side w/1shot/ Chromatic Paint - 5 yr. exterior - 102.00<sup>ee</sup>  
 (unpainted - 82.00)

# PLASTICS FOR DISPLAY AND PRINTING

48" x 96" sheets can be assorted for quantity discount columns

## COROPLAST<sup>®</sup>

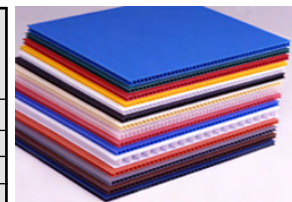
Coroplast is an extruded, twin-wall plastic sheet based on a high-impact polypropylene copolymer. This high quality, polypropylene profile sheet is formulated specifically for screen printing, displays and packaging. It uses a copolymer resin to increase impact and low temperature performance while retaining flexibility.

At regular temperatures most oils, solvents, and water have no effect on Coroplast, allowing it to perform under adverse weather conditions or when exposed to harsh chemicals.

Standard colours: White, Natural, Ivory, Yellow, Brown, Red, Orange, Light Blue, Dark Blue, Navy Blue, Silver Grey, Green and

4' X 8' sheets	1-9	10-24	25
White - 4mm (3/16 in.)	13.95	12.75ea.	11.50 ea.
Colours 4mm (3/16 in.)	14.95	13.95	12.95
White - 6mm.(1/4 in.)	27.95	25.75	23.15
White - 10mm(7/16in.)	44.95	41.95	36.95
Black - 10mm(7/16in.)	54.70	51.75	48.25
White - 4mm - ultra smooth	17.95	16.35	14.75

BLANKS - 4MM WHITE COROPLAST - SMALL SIZES	
24" x 18"	1.67 ea.
24" x 32"	2.95 ea.
24" x 36"	3.33 ea.
24" x 48"	4.43 ea.
32" x 48"	6.13 ea.



ALUMINUM SIGN PANEL

PLASTICS FOR DISPLAY AND PRINTING

## SINTRA<sup>®</sup> MATERIAL

# FOAMED PVC BOARD

FLAME RETARDANT BOARD is a rigid and strong light-weight foamed P.V.C. board which meets fire code regulations. Sold in 4' x 8' sheets. Colours: Red, Blue, Green, Yellow, Light Grey, Grey, Beige, Black. Sintra material is closed-cell, expanded plastic, high-density polyvinylchloride sheet. Sintra is a homogeneous material that allows the ease of cutting without regard for grain. At half the weight of solid PVC, Sintra may be stapled, nailed, riveted, glued, and thermoformed. Forming may be done on conventional forming machines. Because this material is not hydroscopic, it needs no drying pre-forming.

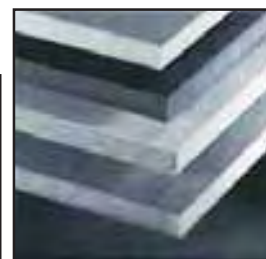
THICKNESS	WHITE	BLACK	COLOURS
3 mm (1/8")	33.75	35.75	43.95
6 mm (1/4")	65.90	69.50	89.95
13 mm (1/2")	135.00	180.75	---
19 mm (3/4")	275.00	----	----
25 mm (1")	375.00	----	----

# GATORFOAM

Both Natural and White Gatorfoam panels are amazingly strong and light-weight. You can use them on a multitude of creative projects, ranging from complex theatre sets to simple photo mounts. And, because they are resistant to sun, wind and rain, both can be used indoors and out. Sold in 4' x 8' sheets.



THICKNESS	WHITE	NATURAL	BLACK
5 mm (3/16")	68.25	68.25	70.35
13 mm (1/2")	97.65	101.85	102.00
19 mm (3/4")	112.35	112.35	126.00
25 mm (1")	134.40	134.40	136.50



# FOME-CORE BOARD

48" x 96" and 32" x 40"

The well known light weight display material. Excellent for signs and displays. Lightweight & rigid. Sizes 48"x96" and 32" x 40" sheets sold singularly or (25 per carton) 3/16" thickness.

SIZE	COLOR	1-5 sheets	6 sheets	25 sheets
48"x 96"	WHITE	16.00 ea.	14.00 ea.	13.00 ea.
48"x 96"	BLACK	20.00 ea.	17.00 ea.	16.00 ea.
32"x 40"	WHITE	4.75 ea.	4.25 ea.	3.75 ea.
32"x 40"	BLACK	5.50 ea.	4.95 ea.	4.39 ea.



# FOAM BOARDS

DEC. 2011

## PVC EXPANDED FOAM BOARD -InteFoam®



InteFoam® is an expanded PVC foam board with a smooth, matte finish. InteFoam® is an excellent substrate for point-of-purchase displays and signs, and is the material of choice for screen-printing and digital printing. The PVC surface is consistently smooth and abrasion resistant. It is ideal for painting and printing.

InteFoam® can be thermoformed and has a variety of applications in the sign, marine, and graphic arts industries. This PVC board can be heat-bent, routed, laminated, and pressure or vacuum formed in a variety of shapes for displays and promotional materials. Vinyl lettering is also easily adhered to InteFoam® PVC sheets.

InteFoam® is lightweight, durable, and chemical and fire resistant. InteFoam® PVC comes in gauges ranging from 3mm to 25mm (1/32" to 63/64"). For 3mm and 6mm gauges, InteFoam® is available in a wide variety of colors.

InteFoam® has been tested and complies with UL94 V0, UL94 5V, UL48. InteFoam® contains no lead or heavy metals.

THICKNESS	SIZE	WHITE	BLACK	COLORS
3MM (1/8")	48"X96"	33.75	34.75	35.50
6MM (1/4")	48"X96"	65.90	69.50	79.50
10MM (3/8")	48"X96"	109.00	-	-

## PVC "CELUKA" FOAM BOARD - InteCel®

InteCel® is an innovative cellular PVC foam board with a hard, smooth surface and manufactured in a unique celuka process. Because InteCel® is waterproof, lightweight, and does not splinter, it is an excellent alternative to wood. InteCel® PVC board is used in signage, arts, crafts, and for interior and exterior building materials.

InteCel® is available in thicknesses ranging from 10mm to 19mm (3/8" to 3/4").

InteCel® can be cut, machined, nailed, glued, and screwed just like wood. The panels can be finished with a quality primer or paint. It is fire resistant (UL-94 V0, 5V), and exhibits superior machining qualities when compared to wood.

THICKNESS	SIZE	WHITE
10MM (3/8")	48"X96"	109.00
13MM (1/2")	48"X96"	129.00
19MM (3/4")	48"X96"	158.00

## PVC "CELUKA" PW FOAM BOARD - InteCel PW®

The same celuka process produces InteCel® PW, a variation of PVC foamed board with added density and stability. InteCel® PW is manufactured by utilizing a combination of expanded polyvinyl chloride (EPVC) and wood flour. The addition of wood flour in the formulation offers greater stability to the PVC sheet and a denser composition which provides greater "pullout" strength when using fasteners. It also creates a tan, wood-like color. In addition to signage InteCel® PW is also used to replace wood in housing construction and other wood applications

InteCel® PW is available in thicknesses ranging from 10mm to 19mm (3/8" to 3/4"). InteCel® can be cut, machined, nailed, glued, and screwed just like wood. The panels can be finished with a quality primer or paint. It is fire resistant (UL-94 V0, 5V), and exhibits superior machining qualities when compared to wood.

THICKNESS	SIZE	PRICE
13MM (1/2")	48" X 96"	182.00
19MM (3/4")	48" X 96"	247.00

THICKNESS	SIZE	PRICE
25MM (1")	48" X 96"	324.00
30MM (1 1/4")	48" X 96"	349.00



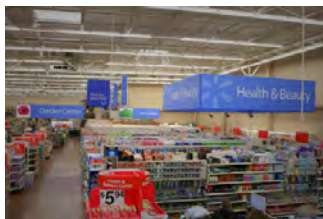
InteCel - white  
InteCel PW - tan

## H.I.P.S. COATED "ULTRA" FOAM BOARD

ULTRA BOARD is a heavy-duty, all-plastic panel that features a litho-grade, high-impact polystyrene surface perfect for screen printing and digital printing. It is ideal for permanent displays and signs.

Ultra Board is designed for interior use and is favored for its durability. The dent-resistant styrene liners are secured to the foam center with a remarkable bond that keeps the panel flat and rigid. The Ultra board surface does not allow moisture to penetrate, so inks and paints stand out vividly for screen-printed, digital printed, or painted images.

Ultra Board can be cut with a circular saw, router, i-cut, or scroll saw, or can be hand cut or die-cut. It is lightweight, strong, and warp resistant, at an exceptional value.



Thickness	Size	White	Black
3/16"	48" x 96"	55.25	61.85
1/2"	48" x 96"	77.45	90.75
3/4"	48" x 96"	93.45	-
1"	48" x 96"	110.00	-

## FOAM ART "ULTRA CORE" BOARD

For temporary or light-duty uses, ULTRA CORE is available. It is both economical and well manufactured to provide a quality foam-centered art board at an affordable price.

**Low Cost** — it delivers many of the exceptional features of the other Ultra products. The panels are rigid and smooth, and are easily cut with a utility knife, razor or die. Ultra Core is ideal for mounting and framing photos and prints, and also works well for screen printing, temporary signs, architectural models, promotional displays and point-of-purchase sales.





PRODUCTS



**ENVIRO BOARD**

Foamcell EnviroGreenBoard is the ultimate solution for “Never Throw Away” sign and display substrates. We have developed the ultimate enviro-friendly sign and graphics substrate. This product features a smooth two sided white clay paper surface made to replace alternative foam boards (made of paper and foamed polystyrene core) that are not recyclable

- Virgin two sided white clay paper laminate
- 90% recycled paper interior
- Perfect for Digital and Screen Print
- Ultra White laminate
- Consistent surface quality ■ Lightweight – easy to handle and install
- Rigid surface yet flexible enough to bend into a 6” diameter curve
- Recyclable in your every day paper recycle bin.



[click here for video](#)

Sheet size: 48" x 96". Thickness 3mm (1/8")  
Price: 17.95 sheet.



**SAVES TIME AND MONEY** - Print directly to Black PVC - No need to Flood Coat with white ink.

**ENVIRONMENTALLY FRIENDLY** - Containing up to 80% recycled foam PVC making it the green alternative.

**BEST DIGITAL/SCREEN PRINTABLE FOAM PVC SHEET IN THE INDUSTRY** - High Density, Hard Surface Means a Better Quality Finish.



Size: 48" x 96"  
Thickness - 3mm (1/8")  
Price: - 35.95 sheet

[see video presentation here](#)

Foamcell Black/White comprises a recycled black core and a surface of premium quality virgin white PVC, providing the optimum surface for any sign and display application. The environmentally friendly sign and display solution.



**GORILLA BOARD**

Foamcell Gorilla Board is our expanded free foam pvc sheet that keeps its shape in the face of corrosion and heat. Gorilla board is the strongest and toughest foam pvc in the industry.

Gorilla Board is a Matte textured Celuka processed foam (PVC) sheet. Gorilla board is design to have the same finish as our Original Foamcell sheet, but with the superior mechanical properties of Celuka extruded sheet, this gives Gorilla Board benefits to be used in both structural and POP applications. Gorilla Board has superior fabrication properties than standard free foam PVC sheet. The enhanced performance and esthetically pleasing matte finish of Gorilla board creates a new class of foam expanded sheet. So when it needs to be tough....use Gorilla Board

- Superior staple and screw retention
- Harder surface, dent and scratch resistant
- Digital printable
- Screen printing
- Fire retardent

- Low water absoption
- More dense, rigid than standard foam pvc
- Indoor/outdoor use
- Warp resistant
- Break resistant

Sheet size 48" x 96"  
12mm (1/2") - 96.00  
19mm (3/4") - 157.00



PLASTICS FOR PRINTING

# PLASTICS FOR PRINTING

## GLOSS VINYL SHEETS

### GLOSSY 2-SIDED VINYL

A rigid vinyl sheet with high impact strength. Economical in price and ideal for signs, displays, vacuum formed parts, templates, calculating instruments, etc.

		<b>.010</b>	<b>.020</b>
CLEAR	22" x 52"	2.20	3.90
OPAQUE WHITE	22" X 52"	2.40	4.20
MATTE WHITE	22" X 52"	2.50	4.50

(100 sheets - less 10% - 200 sheets - less 20%)

## H.I.P. STYRENE

### HIGH IMPACT POLYSTYRENE - WHITE OPAQUE

An inexpensive plastic used extensively for back-lighted transparencies and signs, translights, clock faces, and display items.

	<b>.010</b>	<b>.020</b>	<b>.030</b>	<b>.040</b>	<b>.060</b>	<b>.080</b>	<b>.100</b>	<b>.125</b>
26" x 60"	3.20	----	----	----	----	----	----	----
40" x 72"- prices quoted for this size.								
48" x 96"	----	10.90	15.60	20.75	31.15	40.50	----	----
(10 sheets - less 10%) . (25 sheets - less 15%)								
(sheets can be combined for discount)								
TRANSLUCENT WHITE	.0175	28' x 40"	3.50					

## A.B.S.

### ACRYLIC BUTYLENE STYRENE

A gloss white plastic; popular for outdoor signage because of superior weathering and flexibility. Also good impact resistance for indoor industrial use. .020 gauge is widely used for outdoor pole signs.

	<b>.020</b>	<b>.030</b>	<b>.040</b>	<b>.060</b>	<b>.118</b>	<b>.177</b>	<b>.236</b>
48" x 96"	17.95	26.15	37.50	52.35	-----Check for Prices-----		
(10 sheets - less 10%)							
(Special cut sizes - available upon request)							

## POLYCARBONATE FILM

### POLYCARBONATE (LEXAN TYPE)

These films are both decorative and functionally versatile. The wide choice of surface textures provides optimal flexibility in graphic design with a bold contemporary look. Excellent for highly abrasion resistant nameplates and membrane switch overlays.

PRICE PER SHEET	.010 GAUGE			.020 GAUGE		
	SHEETS 24" x 48"	1-49	50	175(CASE)	1-24	25
Polished Clear	5.35	4.45	3.85	9.75	8.15	6.99
Matte/Velvet	4.75	3.85	3.27	9.25	7.60	6.50

ROLLS 48" Wide	48" wide x 50 feet		48" wide x 25 feet
Gauge	.010	.020	.020
Polished Clear - Roll	150.00 Roll	249.00 Roll	140.00 Roll
Polished Clear - Cut pieces	10.75 Yard	17.75 Yard	17.75 Yard
Matte/Velvet - Roll	129.00 Roll	239.00 Roll	130.00 Roll
Matte/Velvet - Cut pieces	9.25 Yard	16.95 Yard	16.95 Yard

## PETG SHEET

### CO-POLYESTER THERMOPLASTIC FILM

a transparent film with good impact resistance and thermo-forming features. A low cost alternative to polycarbonate. Has superior chemical resistance and is less brittle than acrylic. **Indoor product.**

SHEET SIZE	PRICE PER SHEET			
	.020	.030	.040	.060
48" x 96"	21.30	31.95	39.75	59.50
(10 sheets - less 10%)				
Other gauges available				

## Tyvek®

TYVEK® Dupont's durable sheet product has tough tear and water resistance for outdoor durability. If screen printing check for proper screen inks.

TYPE 1073D - .008 mil		
ROLL SIZE	ROLL	PART ROLL
36" x 100 yds.	299.00	3.45 Yard
47" x 100 yds.	359.00	4.20 Yard

## APPLICATOR SYRINGE

For application of Methylene Chloride, etc. 2 oz. squeeze bottle with needle. **Hypo # 25 - 7.25 each**

## PLEXIGLAS® CLEAR ACRYLIC

Priced on size, gauge, and specifications.

## METHYLENE CHLORIDE

A bonding agent for Acrylics/Plexiglas  
**1 Quart - 16.95 1 Gallon - 48.50**

CONVERSION TABLE		
Point Stock	Approximate Thickness in inches	Approximate Thickness in metric
.010 pt.	1/100"	.25 mm
.020 pt.	1/50"	.50 mm
.030 pt.	1/32"	.75 mm
.040 pt.	1/25"	1.00 mm
.060 pt.	1/16"	1.50 mm
.080 pt.	1/12"	2.00 mm
.100 pt.	1/10"	2.50 mm
.125 pt.	1/8"	3.00 mm



**12.55ea.**  
 comes with 3 blades  
 Blades - (Pkg.3) 5.45

**OLFA PLASTIC CUTTER PC-L**  
 Heavy duty plastic/laminate cutter designed as a scoring tool for sheet plastic and laminates. Allows for precise breaking of plastics.

## KNIFE FOR CORRUGATED PLASTIC

**PLAST-KUT KNIFE - 23.50 ea.**

